



MSA G1™ XR SCBA 2025 Edition

WHEN YOU GO IN, WE GO IN WITH YOU.

Fire Service Equipment

Products for today that drive the future.

As your emergency responder duties expand, as well as your exposure to hazards, MSA continues to provide more emergency response products to exceed your expectations and requirements. MSA supports firefighters and recognizes your role as the front line of protecting others. We are constantly improving products that you have come to rely upon as the best in the industry, to make your job safer and easier. For your protection, you can count on MSA for the most technologically advanced products, and for the best support and training assistance.



We are committed to you.

Working closely with firefighters and rescue teams for over 100 years, MSA's premier focus continues to be the fire service for product innovations, improvements and service. From our Cairns® Fire Helmets, and breakthrough ALTAIR® Gas Detectors, to the most advanced, safety driven breathing apparatus we've ever produced, the G1 SCBA, you can rely upon MSA to offer the very best in personal protective equipment. Your options in gas detection instruments and fall protection/rescue systems are more numerous and better than ever. Our MSA-U® Training Center online training tool provides in-depth product training with team-tracking capability that allows 24/7 instruction for your entire squad. And now Globe, the world's leading maker of innovative protective clothing for firefighters, is part of MSA. Equipping firefighters with the highest level of protection – head to toe, Cairns helmet to Globe boots – no one is as committed to your health and safety as we are.

Our people set us apart from the competition.

MSA's SCBA are manufactured at our award-winning Murrysville, PA facility. Whether your needs include the revolutionary G1 SCBA or a Cairns® Helmet made in Jacksonville, NC, you can be sure that each of them has been made with the dedicated care and skill of an MSA associate whose average time on the job of 18 years means consistent quality, time after time.

Assistance is everywhere.

Your personalized service starts locally with your trained MSA-authorized distributor and MSA's fire service field sales managers. To locate your nearest MSA fire service distributor, or find an answer to an urgent technical question, our award winning, dedicated team of customer service professionals is ready to help, as they understand your hazards as well as regulatory compliance. Contact them at 1-877-MSA-FIRE or visit us at www.MSAFIRE.com.



MSA G1 SCBA iTIC

Find the Hot Spots. And the Heartbeats.

MSA provides personal thermal imaging to every firefighter—from 360 to rescue; egress to overhaul.

The FIRST and ONLY TIC Integrated Directly into the SCBA.

- No additional bulky equipment added to your facepiece or hanging from your gear
- Compatible with all G1 SCBA via simple field upgrade
- Powered by the G1 SCBA's single integrated power source – never check multiple battery locations again
- Single button functionality allows for simple, intuitive use

Take Advantage of the Latest Technology.

- Lightweight—only adds 4.2 oz. compared to standard MSA G1 Control Module
- Up to five user-selectable palettes – 10+ additional palettes available via MSA A2 Software
- 220 x 176 resolution ensures crystal clear images
- Compliant to the 2025 Edition of the NFPA 1970 standard
- A full five-year warranty on thermal imager. Additional 15 years extended warranties available.

The MSA G1 SCBA stands out from the crowd.



1 Facepiece

- Open port design with cross-contamination protection
- Comfortable and easy to use, with low breathing resistance on and off air
- Zero electronics, reducing weight, snag hazards and cost

2 Control

- Integrated Thermal Imaging Camera (TIC) allows firefighter to see within dark, smoke-filled environments
- Five user-selectable palettes – 10+ additional programmable palettes available via MSA A2 Software
- Compatible with all G1 SCBA via simple field upgrade
- Control module provides both color LCD and analog displays
- Display automatically turns on when control module is lifted into viewing position
- No matter which button is pressed, necessary information displays
- Improved visibility through buddy lights

3 Situational Awareness

- Wide field of view through the G1 Facepiece
- Seven three-stage buddy lights providing 360-degree visibility of pressure status
- Highly reflective material on shoulder straps and cylinder band
- Optional integrated TIC provides visibility when it is needed most

4 Information

- HUD provides more information than ever before and can be customized to meet your SOP; cylinder pressure, battery status, evacuation (optional), and so much more

5 Communications

- Loud and clear communications are included with every G1 SCBA
- Intelligently removes background and inhalation noise, helping your commands to be heard



6 Comfort

- Swiveling, adjustable lumbar pad properly positions SCBA weight
- Improved comfort, balance, fit
- Low profile swiveling lumbar pad reduces weight and positions backframe close to the body

7 Power

- Single power source
- Uses alkaline or rechargeable battery
- Eliminates the need to maintain multiple battery sizes or multiple battery locations
- Low cost of ownership

8 Ready for the Future

- Bluetooth connectivity, RFID, Near Field Communication (NFC), long-range radio
- Quickly update the G1 SCBA with the latest advancements through Bluetooth technology, ensuring the SCBA you buy today can easily adapt to meet your needs far into the future

9 Built Just for You

- Control module and HUD display required information; easily customized to meet your existing standard operating procedure
- Modular designs allows for quick component change

About FACE

The G1 Facepiece was designed without electronic components to minimize weight, reduce your stress and fatigue and improve your overall performance level. There are no electronic components on the outside of the facepiece that may result in snag and entanglement hazards. What's more, by eliminating costly electronic components, the price is reduced substantially, allowing personal-issue facepieces to be a cost-effective measure. The G1 facepiece utilizes an inhalation check valve when the second stage regulator is connected, which directs potentially contaminated exhaled air away from the second stage regulator. But MSA didn't stop there. The MSA G1 SCBA is also equipped with a speaking diaphragm to increase speech clarity while off air.

Taking the preferred features of the Ultra Elite Facepiece—Comfort, Field of View, Superior Communications, and Fit—we've taken the G1 Facepiece to the next level with an Open-Port that provides low breathing resistance in standby modes.

The G1 Facepiece can help you to conserve energy for when you need it most.

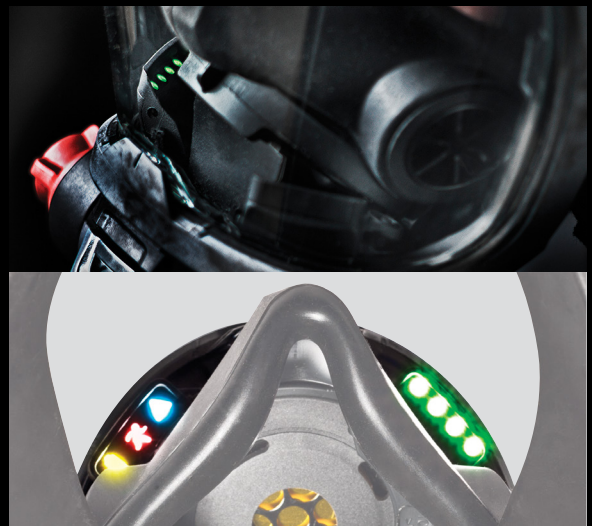


Be Heard

Electronic Voice Amplification Shouldn't Be Optional. Every MSA G1 SCBA is equipped with electronic voice amplification because high quality fireground communications shouldn't be optional. With patent-pending design, dual microphones integrated into the regulator eliminate the Darth Vader-like inhalation sound. This unique feature automatically activates and shuts down with the unit. Shoulder strap-mounted speaker module provides loud and clear communications from the regulator microphone while maintaining low profile to aid in reducing snag points. Every MSA G1 SCBA is equipped with this cutting-edge technology.

Heads Up

Internal HUD display. No facepiece electronics? It's not only possible, it's here. By placing electronics that power the heads up display within the regulator, MSA has effectively reduced weight, profile, pairing, and cross talk. The HUD is inside the facepiece, so external contaminants cannot block the view and vital displayed relayed information. This design means that you no longer have to buy HUDs for each facepiece, reducing costs and maintenance. By using revolutionary light pipes, the MSA G1 SCBA heads up display is clear and simple to understand; it's a HUD system made easy!



Designed to Fit YOUR Needs

Cutting-edge technology. The MSA G1 SCBA with Integrated TIC meets your demands, providing more functionality and safety than ever before. G1 Control Module integrates TIC technology to eliminate the need to carry more gear while adding speed and effectiveness. The iTIC draws power from G1 Power Module—no separate battery is necessary. Control Module offers both analog and color digital LCD displays to make certain that your status is available at all times. Autostart motion control mechanism built into the control module intuitively provides the information you need when you need it. Adding yet another layer to ease-of-use: no matter which button is pressed, your information displays.

Highly configurable and customizable. The MSA G1 SCBA's user-selectable configurations are an industry first: pressure, time remaining calculation, breathing time, temperature (the ability to set your own temperature alarm), and pressure drop (to alert you to leaks, either primary or secondary). What's more, the control module and HUD can be programmed to display information required by your particular specification. But best of all, electronics can be adjusted to YOUR needs. The MSA G1 SCBA provides the ability to configure this device to follow any standard operating procedure, with alarm settings, lights and information provided on the control module. The MSA G1 SCBA is designed for the flexibility you need! The G1 Facepiece can help you to conserve energy for when you need it most.



Always in Demand

G1 Mask-Mounted Regulator. The G1 T4 Regulator houses easy-to-operate heads up display and communications, yet is the smallest and lightest regulator available. The G1 Regulator has an optional purge cover that can be used to start air flow during emergency situations. The G1 Regulator can also be shut off and removed from the mask with one simple action!

The G1 Regulator is always in DEMAND!

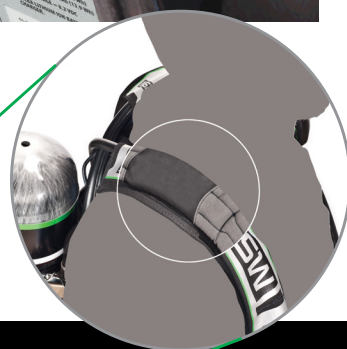
The Power of One

Central Power System. With only one centralized power source, you can use either alkaline or an industry-first rechargeable battery. As the first manufacturer to offer rechargeable batteries, we've taken SCBA protection to a whole new level — finally, an SCBA that doesn't require multiple battery sizes! No need to manage battery types, compartments and change-outs, resulting in lower cost of ownership.

Finally, an SCBA Where One Size Really Can Fit All

Ergonomics. The MSA G1 SCBA is the only SCBA on the market that offers harness customization to ensure improved comfort, balance and fit. By providing an adjustable lumbar pad, you can have a tailored unit with up/down and pivot capabilities that can actually move with you. Widened, adjustable shoulder straps enhance weight distribution and comfort.

Through use of interlocking shoulder straps and strategically placed friction pads, the MSA G1 SCBA provides increased fit and stability while allowing for easy donning and doffing.





Make a Connection

Pressure Reducer. Designed to work with quick-connect or CGA threaded cylinders, there's a connection to meet your needs. Pressure reducer accessory ports allow for future upgrades, including the high pressure Quick-Fill® System. The MSA G1 SCBA is available in both quick-connect and threaded-connection options. With minimal parts, you can easily upgrade from one option to the other! All in all, this unit provides each user with many choices, all of which result in lower cost of ownership.



When Air is Low, Seconds Matter

Universal Air Connection (UAC). When air is low and you must access the UAC for emergency purposes, seconds matter. That's why MSA invented the patent-pending RIT light to shine a bright white LED on the UAC connection, making it easier to find and connect to a rescue air source. The primary UAC illuminates when end of service time indicator (EOSTI) is initiated.



Find the Hot Spots. And the Heartbeats.

The MSA G1 SCBA with Integrated Thermal Imaging Camera provides EVERY firefighter with the ability to see within dark and smoke-filled environments, aiding in your operation's speed and effectiveness from the initial 360, to working the fire, overhaul and rescue. This sight is provided through a thermal imaging camera that is integrated into the G1 SCBA Control Module, eliminating the need to carry additional equipment and the concern of snag hazards.

- Compatible with all G1 SCBA via simple field upgrade
- Powered by the G1 SCBA single integrated power source – never check multiple batteries again
- Single button functionality allows for simple, intuitive use
- Lightweight - Adds only 4.2 oz. as compared to standard G1 Control Module
- Up to five user-selectable palettes
 - 10+ additional palettes available via MSA A2 Software
- 220 x 176 display ensures crystal clear images

A Faster Responder

Conditions faced by firefighters on a daily basis have changed dramatically through the years. The MSA G1 SCBA is designed with technology to drive firefighting into the future. Use of Bluetooth, Radio-Frequency Identification (RFID), Near Field Communication (NFC), and long-range capability allows for fast and easy integration of current and future technologies, providing firefighters with the latest tools available to get their job done.

- MSA G1 SCBA Bluetooth module uses audio and data channels to communicate with Motorola, Kenwood, BKR, and L3 Harris. Use of the same Bluetooth connection lets users connect to the G1 SCBA via MSA A2 Software for custom configuration to your department's standard operating procedures.
- RFID reader/writer stores comprehensive tag information and enables pairing with Bluetooth devices. Incorporated Bluetooth provides data link capability for SCBA data log retrieval and electronics troubleshooting.
- Long-range radio communication provides incident command with specific personnel information through MSA A2 or FireGrid software.



MSA G1 5500 SCBA

Staying at the forefront of safety means constantly evolving to meet the ever-changing demands you face each day on the job. Helping meet these demands MSA's tried-and-trusted G1 SCBA now comes available in a 5500 psig operating system. The MSA G1 offers our lowest profile, most comfortable, streamlined, balanced and configurable SCBA with the lightest weight 5500 psi cylinders on the market today, providing its users:

- Reduced stress and fatigue
- Increased maneuverability in tight spaces, reducing your chance of getting snagged, improving your mobility, and helping keep you safe in dangerous environments
- 30-, 45-, or 60-minute duration cylinders allows you to keep the same operating system, while reducing weight, profile, additional training time and overall expenses

MSA G1 SCBA Accessories

MSA G1 SCBA Rechargeable Battery

MSA offers the first NIOSH-approved and NFPA-compliant SCBA platform to provide a rechargeable battery, eliminating the need for disposable replacement batteries. Portable and compact rapid charger can charge up to six batteries at once; batteries can reach full charge in just six hours.

- Reduced cost of ownership, never waste money on disposable batteries
- No need for multiple battery sizes in multiple locations
- Never waste time on alkaline battery replacement
- Single source powers entire SCBA
- Save 1/2 lb. when compared to alkaline battery pack
- Rapid charging with available smart charger.

PART NUMBER	Description
10148741-SP	MSA Rechargeable Battery
10158385	MSA G1 Charger

* Charger not included



MSA G1 ExtendAire II System

MSA G1 ExtendAire II System is a Universal Emergency Breathing Supply System (UEBSS) accessory that uses intermediate-pressure air to provide firefighters with emergency breathing air by allowing firefighters to quickly and easily interconnect to fellow firefighter's air supply. System integrates into G1 SCBA, providing unrestricted mobility and easy access during emergency situations. Locking quick-connects with integrated check valve prevent contamination of breathing air pathway by ambient atmosphere.

G1 ExtendAire II System features integrated rescue hose and manifold assembly that uses both male and female quick-connect fittings, and stows in low-profile pouch that mounts on carrier assembly.

G1 ExtendAire II System is NIOSH-approved and NFPA 1970-2025 edition-compliant.



EXTENDAIRE II SYSTEM	10205767	ExtendAire II System Conversion Kit for G1 SCBA, UEBSS, 2018/2025 ed
	10203820	Replacement pouch for G1 ExtendAire II System, UEBSS, 2018/2025 ed.
	10156464	ExtendAire II System Conversion Kit for G1 SCBA, 2013 ed.
	10156466-SP	Replacement pouch for G1 ExtendAire II System, 2013 ed.

The Quick-Fill System

The Quick-Fill System lets MSA air mask users refill and transfill air cylinders* while SCBA is worn, without removing the air cylinder—even in IDLH atmospheres. Use this MSA option to:

- Fill SCBA cylinder from a mobile compressor or cascade system in less than a minute.
- Transfill between two cylinders, providing emergency breathing system.*
- Extend air supply over longer durations, using a remote compressed-air source.

Air masks compliant to recent NFPA standards have Quick-Fill System URC fitting located at the Audi-Larm Audible Alarm warning device. Quick-Fill System hose with quick-disconnect connects air source to adapter for air transfer. See Bulletin 0105-92-MC for a Quick-Fill System Q&A.



QUICK-FILL SYSTEM REPLACEMENT	10156465	Waist-mounted Quick-Fill System for MSA G1 SCBA
	10156467	Replacement Quick-Fill System pouch for MSA G1 SCBA
	10156468	3-ft. Quick-Fill System hose in pouch for MSA G1 SCBA

	25 ft.	12 ft.	10 ft.	8 ft.	6 ft.	3 ft.	
QUICK-FILL SYSTEM HOSES	485332	802690	802689	802688	802687	485331	FQD x FQD *
	487907	802677	802675	802673	802671	492796	FQD x CGA-347 outlet
	487909	802685	802683	802681	802679	487427	FQD x CGA-347 CN
	487906	802704	802703	802702	802701	802705	FQD x SAE-4
	487908	802678	802676	802674	802672	492797	FQD x CGA-346 outlet
	487910	802686	802684	802682	802680	487428	FQD x CGA-346 CN

MSA G1 RIT Systems

The Quick-Fill System lets MSA air mask users refill and transfill air cylinders* while SCBA is worn, without removing the air cylinder—even in IDLH atmospheres. Use this MSA option to:

- Fill SCBA cylinder from a mobile compressor or cascade system in less than a minute.
- Transfill between two cylinders, providing emergency breathing system.*
- Extend air supply over longer durations, using a remote compressed-air source.

Air masks compliant to recent NFPA standards have Quick-Fill System URC fitting located at the Audi-Larm Audible Alarm warning device. Quick-Fill System hose with quick-disconnect connects air source to adapter for air transfer. See Bulletin 0105-92-MC for a Quick-Fill System Q&A.

PART NUMBERS	Operating Pressure	Description
10206310	2216	G1 RIT System, FCPC, Regulator, 6-Ft Quick-Fill & ExtendAire II Systems (UEBSS, 2018/2025 ed.), remote gauge, URC, Quick-Connect
10169710	2216	G1 RIT System, FCPC, Regulator, 6-Ft Quick-Fill & ExtendAire II Systems (2013 ed.), remote gauge, URC, Quick-Connect
10206311	4500	G1 RIT System, FCPC, Regulator, 6-Ft Quick-Fill & ExtendAire II Systems (UEBSS, 2018/2025 ed.), remote gauge, URC, Thread Connect
10206313	4500	G1 RIT System, FCPC, Regulator, 6-Ft Quick-Fill & ExtendAire II Systems (UEBSS, 2018/2025 ed.), remote gauge, URC, Quick-Connect
10169711	4500	G1 RIT System, FCPC, Regulator, 6-Ft Quick-Fill & ExtendAire II Systems (2013 ed.), remote gauge, URC, Quick-Connect
10192465	4500	G1 RIT System, FCPC, Regulator, 6-Ft Quick-Fill & ExtendAire II Systems (2013 ed.), remote gauge, URC, Thread Connect
10206312	5500	G1 RIT System, FCPC, Regulator, 6-Ft Quick-Fill & ExtendAire II Systems (UEBSS, 2018/2025 ed.), remote gauge, URC, Quick-Connect
10197179	5500	G1 RIT System, FCPC, Regulator, 6-Ft Quick-Fill & ExtendAire II Systems (2013 ed.), remote gauge, URC, Quick-Connect

Note: This RIT system does NOT include cylinder. Please see cylinder ordering information.



G1 RescueAire® II System

The MSA G1 RescueAire II System for Rapid Intervention Teams (RITs) provides firefighters with emergency breathing air, including air supply to trapped firefighters wearing SCBA with compatible system(s). Built for extreme fire service conditions, G1 RescueAire II System offers two operating pressures, 2216 and 4500 psi. Optional-use shoulder strap provides hands-free carrying.

System incorporates G1 Regulator; RIT teams can provide air to downed firefighter wearing G1 Facepiece. G1 Regulator connects directly to G1 Facepiece for maximum rescue capability, supported by flame and heat-resistant carrying harness of Nomex and Kevlar materials.

G1 RescueAire II System includes:




- SuperLite® Cylinder
- 36" Quick-Fill System EBS Connection
- ExtendAire System EBS Connection
- G1 PR-14 Pressure Reducer
- G1 Regulator
- Carrying harness with adjustable shoulder strap
- Audi-Larm™ Audible Alarm low pressure warning device

PART NUMBER	Description
10161130	RescueAire II System, Snap-Tite, 4500, 60-min cylinder
10161142	RescueAire II System, Snap-Tite, 4500, less cylinder
10161141	RescueAire II System, Snap-Tite, 2216, 30-min cylinder
10161143	RescueAire II System, Snap-Tite, 2216, less cylinder
10207540	RescueAire II System, UEBSS, 4500, 60-min cylinder
10207542	RescueAire II System, UEBSS, 4500, less cylinder
10207541	RescueAire II System, UEBSS, 2216, 30-min cylinder
10207543	RescueAire II System, UEBSS, 2216, less cylinder

MSA Rescue Belt II System for MSA G1 SCBA

MSA's innovative device for emergency egress, the Rescue Belt II System for the G1 SCBA, is an integrated personal escape system that allows firefighters to rappel to safety should they become trapped in a building's upper level. G1 Rescue Belt II System is NFPA 2500-certified for use as a personal escape system for emergency escape when installed on MSA-approved air masks. Device can also be used as a standalone product when not installed on an air mask. The Rescue Belt II System can be ordered as an MSA G1 SCBA option or as an individually-sold component for upgrade of your existing MSA G1 SCBA.



Rope	Connectors		
	 Crosby Hook	 Carabiner	 Lightning GT Hook
50-FT. MSA SAFETECH	10173102	10173103	10173105

MSA G1 PremAire® Cadet Escape Respirator

This combination supplied-air respirator with escape cylinder is used for entry into or escape from hazardous, confined space or immediately dangerous to life or health atmospheres. Streamlined, lightweight design incorporates a technologically advanced, light, low profile, open-port facepiece that provides cross-contamination protection.

- One-piece cylinder valve and first-stage regulator incorporates downstream design to reduce moisture buildup and dual springs for maximum reliability.
- Low-profile escape cylinder is worn on either right or left hip for easier movement within tight spaces.
- Shoulder support strap incorporates hose keeper; regulator hose stays close to body to reduce snagging.
- Escape cylinders rated at 5-, 10- and 15-minutes.
- Pressure gauge recessed into valve housing protects gauge and reduces size and profile.
- Two harness materials: standard nylon for chemical resistance and Kevlar for high heat environments or those with spark potential.
- Regulator offers bypass and purge cover.
- NIOSH-approved as combination supplied-air respirator and self-contained breathing apparatus.



Ordering Selection Matrix

A Type

PCG PremAire Cadet Escape G1

B Carrier & Harness Type

- 1 Nylon, strap carrier, standard
- 2 Kevlar, strap carrier, standard
- 3 Nylon, bag carrier, standard
- 4 Kevlar, bag carrier, standard

Notes:

Aluminum escape cylinders are not compatible with bag carriers.

C Pad Option

- 0 None
- 1 Shoulder

D Escape Cylinder

- A 5-minute aluminum
- B 10-minute aluminum
- C 5-minute carbon
- D 10-minute carbon
- E 15-minute carbon
- F 5-minute aluminum, less air
- G 10-minute aluminum, less air
- H 5-minute carbon, less air
- J 10-minute carbon, less air
- K 15-minute carbon, less air

E MMR Regulator

A G1 Regulator, purge cover

F G1 Facepiece

- 1 None
- 2 G1 Facepiece with 4-pt adjustable head harness, medium^m
- 3 G1 Facepiece with 5-pt adjustable head harness, medium^m
- 4 G1 Facepiece with rubber head harness, medium^m

Notes:

If desired facepiece is not available here, choose "None" and select from the G1 Facepiece ATO.

G Quick Disconnect

- 0 None
- A Snap-Tite, aluminum
- B Snap-Tite, stainless steel
- C Snap-Tite, brass
- D Hansen, stainless steel
- E Hansen, brass
- F Foster, steel
- G Foster, stainless steel
- H Foster, brass
- J Snap-Tite, locking, aluminum
- K Snap-Tite, locking, stainless steel
- M Snap-Tite, locking, brass
- N Foster, stainless steel
- P Cejn, locking

H Case

- 0 None
- 1 Hard plastic case

Key:

^m Facepiece includes nosecup, but does not include neckstrap.

Note:

An additional surcharge will be added to configurations that are classified as hazardous materials

A	PCG								
	A	B	C	D	E	F	G	H	Quantity
PART NUMBER									

MSA A2 Configuration Software

MSA A2 Software offers the ability to customize your SCBA to meet your SOP, analyze use data and reliably enhance firefighter safety and accountability on the fire scene. Software monitors firefighter status remotely from incident command. In-depth reporting capabilities include data log search for incident reports by date and/or alarm type; reports can be exported, filtered, printed, and more. Users can also retrieve event logs for any recorded incidents.

- Software provides the ability to configure alarm, control module, accountability, speaker module, and HUD settings.
- MSA G1 SCBA stores usage data; MSA A2 Software allows viewing of incident date, duration, air used, alarm status, and more.
- Tag creation allows G1 SCBA customization to meet your needs and track the location of each component. Incident event logs include date, time, duration, incident number, dispatch center number, firefighter name, firefighter team, PASS device serial number, time firefighter went on-air, any event recorded, and pressure remaining when event occurred.



Additional G1 SCBA Accessories

Part Number	Description
10148740-SP	Replacement alkaline battery pack
10148741-SP	Replacement rechargeable battery pack
10158385	Rechargeable battery charging station
10149701-SP	Quick-connect adapter for 2216 psig cylinders
10149702-SP	Quick-connect adapter for 4500/5500 psig cylinders
10158389	Retainer Kit for H-30 carbon (807587) 4500 psig (Type 2 - dovetail)
10158390	Retainer Kit for H-45 LP carbon (10035644) 4500 psig (Type 3 - dovetail)
10158401	Retainer Kit for L-30 carbon (807586) 2216 psig (Type 4 - dovetail)
10162403	Quick-connect adapter for fill station
10158401	Retainer Kit for H-45 carbon (807570) 4500 psig (Type 4 - dovetail)

Part Number	Description
10158402	Retainer Kit for H-60 carbon (807588) 4500 psig (Type 5 - dovetail)
10158408	Quick-connect adapter for fill station
10164940	G1 Custom Tool Kit
10083875	RFID Tag
10158407	RFID reader/writer (primary use with A2)
10186214	RFID read only (primary use with AIMS)
10175010-SP	G1 Control Module w/ Integrated TIC upgrade kit - 2216 psig
10175021-SP	G1 Control Module w/ Integrated TIC upgrade kit - 4500/5500 psig
10183992	Kit, Protective Cap & Boot for 30 min cylinder
10183993	Kit, Protective Cap & Boot for 45 min LP cylinder

MSA Connected Firefighter Platform

FireGrid

FireGrid is a suite of cloud-connected applications that provide accurate and timely safety information, with minimal to no additional burden, to enable fire departments to make faster, more informed, and confident decisions during live events and post-scene. FireGrid's applications enhance, automate, and digitize manually burdensome existing incident management, reporting, and inventory management processes.

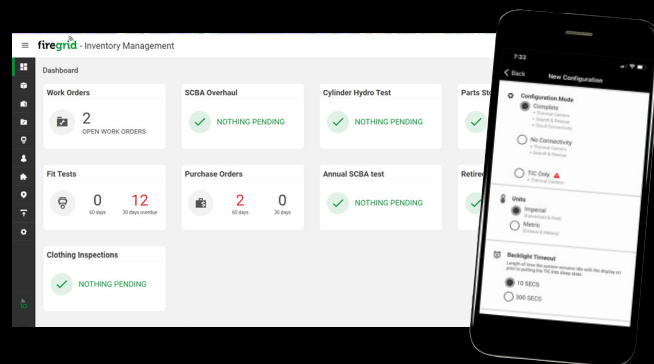
MSA's applications leverage on-scene device data to enable Incident Commanders to make more-informed decisions and aid in reducing cognitive overload through increased situational awareness of devices, personnel and event data. Post-scene, FireGrid provides automated report generation, capturing detailed device and personnel data from cloud-connected devices. On-scene product usage information is automatically stored in the cloud to access from anywhere.

Inventory management is enabled by a centralized, cloud-based digital asset management and compliance application. Simply using the connected devices drives usage-based preventative maintenance, enhanced fleet management, improved resource efficiency and the ability to avoid over-servicing product due to the on-scene data automatically documenting and storing in the inventory management application. FireGrid aids in ensuring all products are compliant and ready for use through summary dashboards and assigning inspection and service procedure reminders. Dashboard analytics visualize department trends to understand what's happening over time.

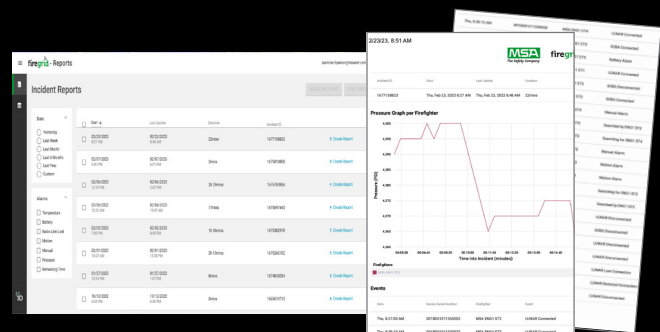
LOCAL MONITORING



INVENTORY MANAGEMENT



REPORTS AND ANALYTICS



The MSA Connected Firefighter Platform is a network of products expanding the connectivity offering of MSA solutions to enhance firefighter safety. The Connected Firefighter Platform is comprised of MSA's cloud-connected products enabling incident command, inventory management compliance as well as reporting and analytics. It includes the G1 SCBA at the center, MSA HUB Fire Service, LUNAR® Connected Device, and FireGrid™.



MSA HUB

The MSA HUB provides a wireless gateway to the cloud, enabling local monitoring of device and personnel data. The MSA HUB creates its own hotspot for local use with no internet connection needed or connects to the cloud via an existing internet connection, inclusive of LTE. It connects to the tablet application for local monitoring and sends all data to the FireGrid web-based platform for post-scene evaluation, reporting and inventory management.

LUNAR CONNECTED DEVICE

As part of MSA's Connected Firefighter Platform, LUNAR® Connected Device and FireGrid provide search and rescue technology, situational awareness, and an enhanced incident command experience—on and off scene. This Connected Firefighter solution aids in locating a downed team member, automatically notifying team members including Incident Command that there is a device in alarm, situational awareness, and connectivity for more informed and confident decision making. LUNAR's direct cloud connection provides device data to Incident Command on MSA's tablet-based local monitoring application and is available for use on FirstNet®, ensuring priority on AT&T's cellular network.





G1 SCBA Cylinders

Standard, Lightweight Carbon Cylinders

MSA Standard, Lightweight Carbon Cylinders (also known as SuperLite Cylinders) are a staple in the Fire Service. Available in 2216, 4500, and 5500 psi, these cylinders are durable and lightweight. The cylinder is wound thousands of times with high-strength carbon fibers impregnated with epoxy resin.

A final over-wrap of fiberglass fibers enhances abrasion resistance. Then, a glow-in-the-dark luminescent band is applied for improved night visibility.

Eclipse Cylinders

The Eclipse Cylinder is a new option for the G1 SCBA that provides an exciting, sleek black finish. The Eclipse Cylinders incorporate a lightweight and streamlined design and are available in 4500 psi with 30-minute and 45-minute Low-Profile rated service duration.



G1 SCBA Cylinder Options

MSA G1 SCBA Cylinders are available for purchase in a wide variety of options and ability for customization.

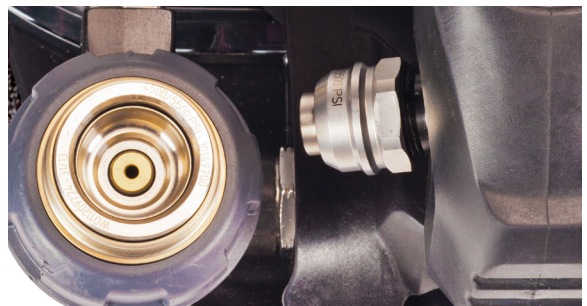
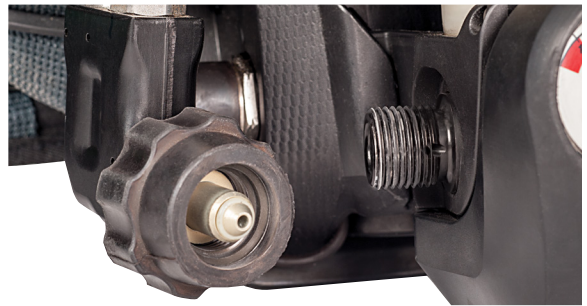
Connection Type

Threaded Remote Connection

Threaded Remote Connection is available in CGA 346 (2216 psi) and CGA 347 (4500 and 5500 psi) for a traditional, thread on connection.

Quick-Connect Remote Connection

The Quick-Connect option is available for rapid, quick changing of cylinders. The Quick-Connect Cylinders come with an installed adapter to easily push-to-connect with the remote handwheel.



Handwheel Type



Standard Handwheel

The Standard handwheel allows for simple and easy opening and closing of the cylinder valve by turning the handwheel knob.



Locking Handwheel

The Locking handwheel locks when the cylinder valve is in an open position. It requires only a simple turning motion of the handwheel to open the cylinder, but to close the cylinder valve the user must pull the handwheel outward and then turn to close.



Custom Logo

For easy-to-read cylinder identification, MSA can customize any G1 Cylinder to have a department's logo wrapped under the clear coat of the cylinder.

This customization can be done by either a reflective or paper band in single or multi-color.

Custom Labels



Single Color



Multi Color

G1 SCBA Cylinder Specs

Standard, Lightweight Carbon Cylinders					
Cylinder Pressure	Service Time	Available Breathable Air	Cylinder Height (w/Valve)	Cylinder Diameter	Cylinder Weight (Full)
30-minute Cylinders					
2216 PSI	30 Minutes	45 ft. ³	22.8" (579 mm)	6.7" (170 mm)	11.3 lb. (5.1 kg)
4500 PSI	30 Minutes	45 ft. ³	21.4" (544 mm)	5.4" (137 mm)	10.4 lb. (4.7 kg)
5500 PSI	30 Minutes	45 ft. ³	21.0" (533 mm)	5.0" (127 mm)	9.9 lb. (4.5 kg)
45-minute Cylinders					
4500 PSI	45 Minutes (low-profile)	65 ft. ³	23.1" (587 mm)	6.3" (160 mm)	13.9 lb. (6.3 kg)
4500 PSI	45 Minutes	65 ft. ³	21.0" (533 mm)	6.8" (173 mm)	14.4 lb. (6.5 kg)
5500 PSI	45 Minutes	65 ft. ³	22.7" (577 mm)	5.8" (147 mm)	13.5 lb. (6.1 kg)
60-minute Cylinders					
4500 PSI	60 Minutes	87 ft. ³	23.9" (607 mm)	7.1" (180 mm)	17.2 lb. (7.8 kg)
5500 PSI	60 Minutes	87 ft. ³	22.7" (577 mm)	6.7" (170 mm)	17.4 lb. (7.9 kg)
Eclipse Cylinders					
4500 PSI	30 Minutes	45 ft. ³	21.7" (551 mm)	5.4" (137 mm)	10.2 lb. (4.6 kg)
4500 PSI	45 Minutes (low-profile)	65 ft. ³	23.5" (597 mm)	6.1" (155 mm)	13.5 lb. (6.1 kg)



2216 psi Standard
yellow band



4500 psi Standard
green band



5500 psi Standard
blue band



4500 psi Eclipse
green band

MSA G1 SCBA Cylinder Ordering Information

MSA G1 SCBA Cylinders for Threaded Remote Connection

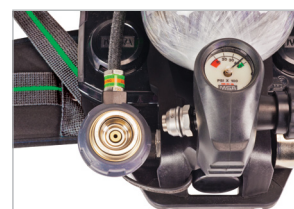
Cylinder Pressure	Cylinder Type	Connection Type	Handwheel Type	Air	Less Air
2216 PSIG	30-minute	Threaded	Standard	10156422-SP	10156431-SP
4500 PSIG	30-minute	Threaded	Standard	10156423-SP	10156432-SP
4500 PSIG	45-minute (<i>low-profile</i>)	Threaded	Standard	10156424-SP	10156433-SP
4500 PSIG	45-minute	Threaded	Standard	10156425-SP	10156434-SP
4500 PSIG	60-minute	Threaded	Standard	10156426-SP	10156435-SP
5500 PSIG	30-minute	Threaded	Standard	10185508	10185602
5500 PSIG	45-minute	Threaded	Standard	10185509	10185603
5500 PSIG	60-minute	Threaded	Standard	10185510	10185604



Threaded Remote Connection

MSA G1 SCBA Cylinders for Quick-Connect Remote Connection

Cylinder Pressure	Cylinder Type	Connection Type	Handwheel Type	Air	Less Air
2216 PSIG	30-minute	Quick-Connect	Standard	10175706	10175711
4500 PSIG	30-minute	Quick-Connect	Standard	10175707	10175712
4500 PSIG	45-minute (<i>low-profile</i>)	Quick-Connect	Standard	10175708	10175713
4500 PSIG	45-minute	Quick-Connect	Standard	10175709	10175714
4500 PSIG	60-minute	Quick-Connect	Standard	10175710	10175715
5500 PSIG	30-minute	Quick-Connect	Standard	10181628	10181708
5500 PSIG	45-minute	Quick-Connect	Standard	10181629	10181709
5500 PSIG	60-minute	Quick-Connect	Standard	10181630	10181710



Threaded Remote Connection

MSA G1 SCBA Standard Cylinders for Threaded & Quick-Connect Remote Connection w/Locking Handwheel

Cylinder Pressure	Cylinder Type	Connection Type	Handwheel Type	Air	Less Air
4500 PSIG	30-minute	Threaded	Locking	10191802	10191838
4500 PSIG	45-minute (<i>low-profile</i>)	Threaded	Locking	10191806	10191842
4500 PSIG	45-minute	Threaded	Locking	10191804	10191840
4500 PSIG	60-minute	Threaded	Locking	10191808	10191844
4500 PSIG	30-minute	Quick-Connect	Locking	10191803	10191839
4500 PSIG	45-minute (<i>low-profile</i>)	Quick-Connect	Locking	10191807	10191843
4500 PSIG	45-minute	Quick-Connect	Locking	10191805	10191841
4500 PSIG	60-minute	Quick-Connect	Locking	10191809	10191845

MSA G1 SCBA Eclipse Cylinders

Cylinder Pressure	Cylinder Type	Connection Type	Handwheel Type	Air	Less Air
4500 PSIG	30-minute	Threaded	Standard	10204941	10204965
4500 PSIG	45-minute (<i>low-profile</i>)	Threaded	Standard	10204945	10204969
4500 PSIG	30-minute	Quick-Connect	Standard	10204942	10204966
4500 PSIG	45-minute (<i>low-profile</i>)	Quick-Connect	Standard	10204946	10204970
4500 PSIG	30-minute	Threaded	Locking	10204943	10204967
4500 PSIG	45-minute (<i>low-profile</i>)	Threaded	Locking	10204947	10204971
4500 PSIG	30-minute	Quick-Connect	Locking	10204944	10204968
4500 PSIG	45-minute (<i>low-profile</i>)	Quick-Connect	Locking	10204948	10204972

MSA G1 SCBA Cylinder Accessories

Part Number	Description
10149701-SP	Quick-Connect adapter for 2216 psig cylinders
10149702-SP	Quick-Connect adapter for 4500/5500 psig cylinders
10158389	Retainer kit for 4500 psig, 30-min. cylinder (type 2 dovetail)
10158390	Retainer kit for 4500 psig, 45-min. low-profile cylinder (type 3 dovetail)
10158401	Retainer kit for 4500 psig, 45-min. cylinder (type 4 dovetail)
10158402	Retainer kit for 4500 psig, 60-min. cylinder (type 5 dovetail)
10162403	Quick-Connect adapter for fill station
10183992	Kit, protective cap & boot for 30-min. cylinder
10183993	Kit, protective cap & boot for 45-min. low-profile cylinder



Cap & Boot

The Cap & Boot provide a protective, rubber cover to the top and bottom of the cylinder. Only available for Standard, Lightweight Carbon Cylinders in 30-minute and 45-minute LP 4500 psi.

MSA G1 SCBA Accessories

Part Number	Description
10148740-SP	Replacement alkaline battery pack
10148741-SP	Replacement rechargeable battery pack
10158385	Rechargeable battery charging station
10164940	G1 Custom Tool Kit
10083875	RFID Tag
10158407	RFID reader/writer (primary use with A2)
10186214	RFID read only (primary use with AIMS)
10175010-SP	G1 Control Module w/ Integrated TIC upgrade kit - 2216 psig
10175021-SP	G1 Control Module w/ Integrated TIC upgrade kit -4500/5500 psig

MSA G1 SCBA Facepieces

Part Number	Type	Size	Nosecup Size	Head Harness	ATO Configuration
10156458	Fire service	Small	Small	4-pt. adjustable	G1FP-F-S-1-S-4-0-1
10156459	Fire service	Medium	Medium	4-pt. adjustable	G1FP-F-M-1-M-4-0-1
10156460	Fire service	Large	Large	4-pt. adjustable	G1FP-F-L-1-L-4-0-1
10156461	Fire service	Small	Small	Rubber	G1FP-F-S-1-S-R-0-1
10156462	Fire service	Medium	Medium	Rubber	G1FP-F-M-1-M-R-0-1
10156463	Fire service	Large	Large	Rubber	G1FP-F-L-1-L-R-0-1
10161812	Fire service	Small	Small	5-pt. adjustable	G1FP-F-S-1-S-5-0-1
10161813	Fire service	Medium	Medium	5-pt. adjustable	G1FP-F-M-1-M-5-0-1
10161814	Fire service	Large	Large	5-pt. adjustable	G1FP-F-L-1-L-5-0-1



MSA SCBA Facepiece Accessories

Part Number	Description
496081	PAPR Type H filter cartridge (6-pk.)
10042346	PAPR Type H filter cartridge (20-pk.)
10067469	P100/OV canister (1-pk.)
10094315	P100/OV canister (12-pk.)
10144230	Spectacle Kit for G1 Facepiece
10152979	Riot control P100/CN/CS canister (1-pk.)
10160594	Multigas GME/CS/CN/P100 cartridge (1-pk.)

Part Number	Description
805078	Quik Chek® Fit Test Adapter
10144220-SP	Replacement cloth neck strap
10159699-SP	Replacement rubber neck strap
10144231-SP	APR filter adapter assembly
10189322	G1 CBRN Nosecup, Large
10189323	G1 CBRN Nosecup, Medium/Small
10046570	CBRN Canister
10144230	G1 Spectacle Kit

Ordering Selection Matrix

A Application

F Fire

B Size

S Small

M Medium

L Large

C Material

1 Hycar

D Nosecup

0 None

S Small

M Medium

L Large

E Head Harness

0 None

4 4 pt Adjustable

5 5 pt Adjustable

R Rubber

F Neckstrap

0 None

C Cloth

R Rubber

G Regulator Connection

1 Fixed Push-to- Connect

Note:

Part numbered facepieces are also available

An additional surcharge will be added to configurations that are classified as hazardous materials

A-G1FP

		1				1
A	B	C	D	E	F	G

PART NUMBER

Quantity



MSA G1 SCBA Fire Service Edition

Ordering Selection Matrix

A System Pressure

- 4 4500 psig
- 5 5500 psig ^[1]

B Cylinder Connection

- 2 CGA Threaded Remote Connection
- 4 CGA Quick Connect Remote Connection

C Harness

- 3 Serviceable Tunnel without Chest Strap
- 4 Serviceable Tunnel with Chest Strap
- 9 Serviceable Tunnel without Chest Strap No PASS
- 10 Serviceable Tunnel with Chest Strap No PASS

D Cradle Type

- M Metal Band

E Lumbar Type

- A Adjustable Swiveling Lumbar Pad
- D Adjustable Swiveling, Solid buckle
- P Low Profile Swiveling Lumbar Pad
- R Low Profile Swiveling Lumbar Pad, Solid Buckle
- 1 Rescue Belt II Crosby Hook, 50'
- 2 Rescue Belt II Carabiner, 50'
- 8 Rescue Belt II Lightning GT Hook, 50' Aramid/ Nylon Rope

F Regulator Type

- 1 Purge Cover T4 Left Shoulder
- 2 Solid Cover T4 Left Shoulder

G Regulator Hose Type

- C Continuous
- Q Quick Connect

H Emergency Breathing Support

- 0 None
- 1 Waist Mounted Quick-Fill ^[1]
- 2 ExtendAire II
- 3 Waist Mounted Quick-Fill and ExtendAire II ^[1]
- 4 Hose and pouch
- 5 Waist-mounted Quick-Fill w/hose and pouch ^[1]
- 6 ExtendAire II w/ hose and pouch
- 7 Waist-mounted Quick-Fill w/hose and pouch, ExtendAire II ^[1]
- A Pouch only

J Speaker Module

- L Left Chest ^[2]
- 0 None

K PASS

- A PASS Right Shoulder ^[2]
- C PASS Telemetry Right Shoulder ^[2]
- E PASS Right Shoulder w/ Integrated TIC ^[2]
- G PASS Telemetry Right Shoulder w/ Integrated TIC ^[2]
- H No PASS Right Shoulder ^{[2][4]}
- J No PASS Telemetry Right Shoulder ^{[2][4]}
- K No PASS Right Shoulder w/ Integrated TIC ^{[2][4]}
- L No PASS Telemetry Right Shoulder w/ Integrated TIC ^{[2][4]}

L Battery Type

- A Alkaline
 - R Rechargeable ^[3]
- Notes:**
If Telemetry is ordered R must be selected.

Key:

- ^[1] SCBA to SCBA Transfiling is not available with the 5500psig operating system
- ^[2] As Worn
- ^[3] Charger sold separately
- ^[4] Can only be combined with Harness option 9 or 10

Note:

An additional surcharge will be added to configurations that are classified as hazardous materials

A-GIFS

A	B	C	D	E	F	G	H	J	K	L	Qty
PART NUMBER											

Note: This Bulletin contains only a general description of the products shown. While product uses and performance capabilities are generally described, the products shall not, under any circumstances, be used by untrained or unqualified individuals. The products shall not be used until the product instructions/user manual, which contains detailed information concerning the proper use and care of the products, including any warnings or cautions, have been thoroughly read and understood. Specifications are subject to change without prior notice. MSA is a registered trademark of MSA Technology, LLC in the US, Europe, and other Countries. For all other trademarks visit <https://us.msasafety.com/Trademarks>.

MSA operates in over 40 countries worldwide. To find an MSA office near you, please visit [MSAsafety.com/offices](https://us.msasafety.com/offices).