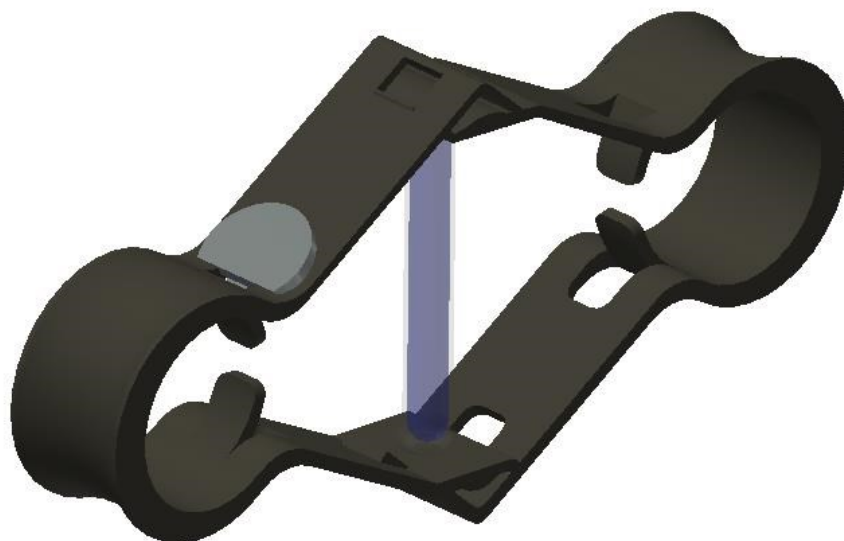


JOB QUICK RESPONSE LINKS



Part No.	Response Type	Link Rating		Max. Ambient Temperature	
		°F	°C	°F	°C
16225	Quick	200 °F	93 °C	150 °F	66 °C
16226	Quick	286 °F	141 °C	225 °F	107 °C
16227	Quick	360 °F	182 °C	300 °F	149 °C
16445	Quick	450 °F	232 °C	375 °F	191 °C
16446	Quick	500 °F	260 °C	425 °F	218 °C

Multiple temperature ratings of the Job Links are available. They are constructed of two metal struts held intension by a small, glass bulb that ruptures at the appropriate temperature rating. The detector bracket (P/N 12508-P001) will support either the Globe Type 'K' fusible links or the Job links, and the same detector limitations apply for both types of detector.

Available as singles or as bulk packs with P/N #####-P005